



ANLY TIMER

SST SOLID STATE TIMER



CHARACTERISTIC :

- Contact-Free control for fast operation and long life
- Humidity resistant, suitable for air conditioner and refrigeration equipment

SST-2 Special Characteristics

- Wide operating voltage range in a single unit, from AC/DC 80V~240V
- Wide timing range (1~1023sec or 1~1023min) selectable via DIP switch

SST-3 Special Characteristics

- Delay start - using auto lock-rotor feature to avoid generators and pumps being damaged due to repeated attempt to restart in short intervals

SPECIFICATION :

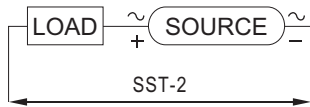
Operating voltage	SST-2 AC / DC(V): 80 ~ 240 SST-3 AC(V): 24, 120, 230
Allowable operating voltage range	85~110% of rated operating voltage
Rated frequency	50 / 60 Hz
Contact rating	250VAC 1A (resistive load)
Reset time	MAX 0.2S
Power consumption	Approx. 2VA
Life	Electrical: 100,000 times
Ambient temperature	-10 ~ +50°C
Ambient humidity	MAX 85%RH
Weight	SST-2 Approx. 65g SST-3 Approx. 55g

TYPE SELECTION :

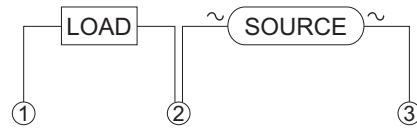
Type	SST-2	SST-3
Output contact	1a (1Amp)	1a (1Amp)
Time range	1023S / 1023M DIP switch setting	2M, 3M or 5M FIXED

CONNECTION :

SST-2

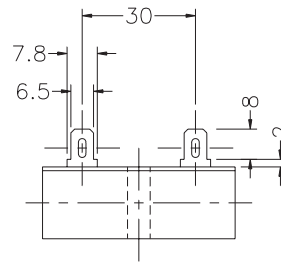
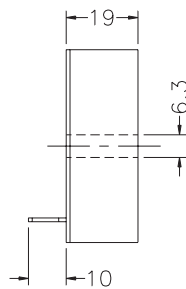
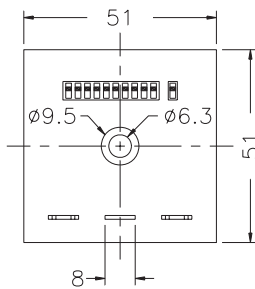


SST-3

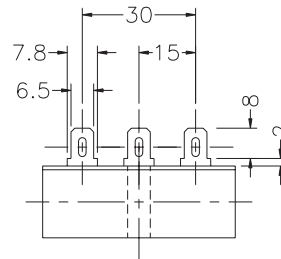
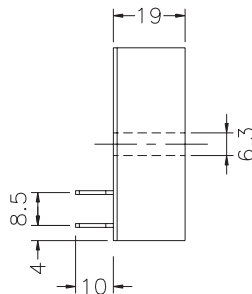
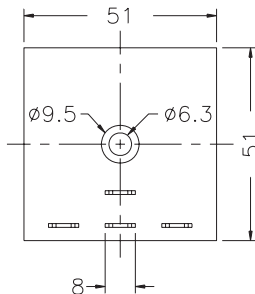


DIMENSIONS : (mm)

SST-2



SST-3



ANLY ELECTRONICS CO., LTD.

<http://www.anly.com.tw>

TAIWAN MAIN OFFICE : ANLY ELECTRONICS CO., LTD.

No.19, Lane 202, Fushou St., Shinjuang City, Taipei, Taiwan 242
TEL: +886-2-2996-3202 FAX: +886-2-2996-2017

MALAYSIA BRANCH : JUSTY ELECTRONICS (M) SDN, BHD.

No.1, Jalan 6/89B, Kawasan Perindustrian Trisegi, Batu 3 1/2 Off Jalan Sungei Besi, 57100 Kuala Lumpur, Malaysia
TEL: +60-3-7983-5758 FAX: +60-3-7981-5052

HONG KONG BRANCH : ANLY ELECTRONICS (HK) LTD.

Flat K, 13/F, Edward Mansion, 141 Prince Edward Road W., Kowloon, Hong Kong
TEL: +852-2397-2505 FAX: +852-2397-6080

SHANGHAI BRANCH : ANLY TECHNOLOGY (WUXI) CO., LTD.

Room 13G, No.831, Xinzha Rd., Jingan District, Shanghai, China 200041
TEL: +86-21-6218-3300 FAX: +86-21-6217-5911

NO. SST-H-A