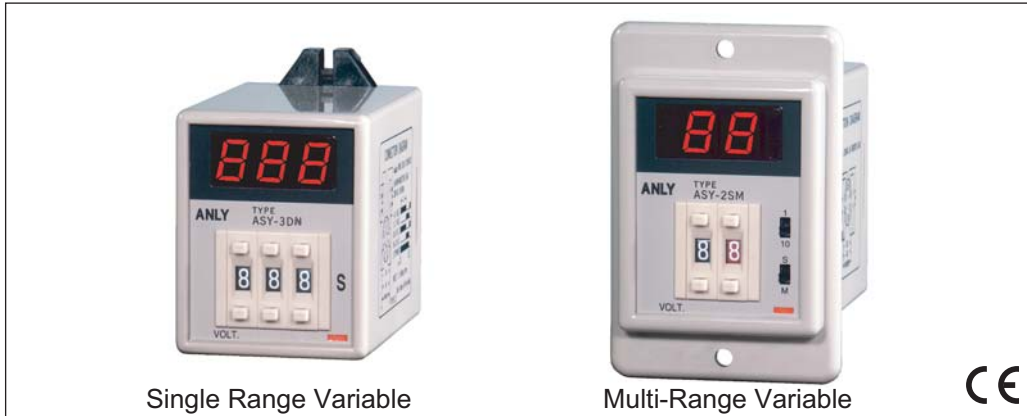




ANLY TIMER

ASY MULTI-RANGE DIGITAL TIMER



Single Range Variable

Multi-Range Variable



CHARACTERISTIC :

- Crystal oscillator for extreme accuracy
- 7-segment-display for clear display
- Pushwheel switch for accurate setting
- Available on Count Up model or Count Down model
- CE certified

SPECIFICATION :

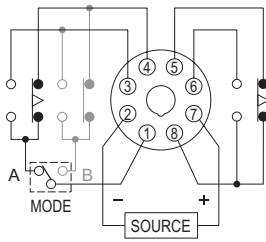
Operating voltage	DC(V): 12, 24 AC(V): 12, 24, 110, 220, 240
Allowable operating voltage range	85~110% of rated operating voltage
Rated frequency	50 / 60 Hz
Contact rating	250VAC 5A (resistive load)
Reset time	MAX 0.3S
Power consumption	Approx. 3VA
Life	Mechanical: 5,000,000 times Electrical: 100,000 times
Ambient temperature	-10 ~ +50°C
Ambient humidity	MAX 85%RH
Weight	Approx. 240g

TYPE SELECTION :

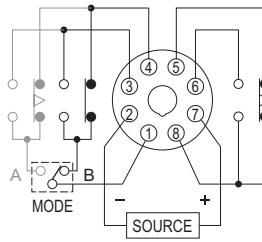
Model	Single Range Variable			Multi-Range Variable			
	2C	1A1C	G Type	Mode A / B	G Type	Mode A / B	G Type
Type	ASY-2D	ASY-2DA	ASY-2DG	ASY-2SM	ASY-2SMG	ASY-2MH	ASY-2MHG
Time range	9.9S , 99S , 9.9M , 99M , 9.9H or 99H			9.9S / 99S / 9.9M / 99M		9.9M / 99M / 9.9H / 99H	
Type	ASY-3D	ASY-3DA	ASY-3DG	ASY-3SM	ASY-3SMG	ASY-3MH	ASY-3MHG
Time range	9.99S, 99.9S, 999S, 99.9M, 999M, 99.9H or 999H			99.9S / 999S / 99.9M / 999M		99.9M / 999M / 99.9H / 999H	

CONNECTION :

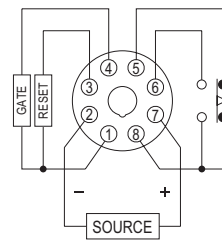
2C, Mode A



1A1C, Mode B

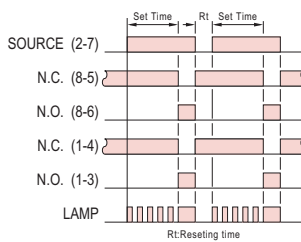


G Type

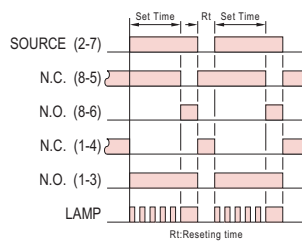


TIMING CHART :

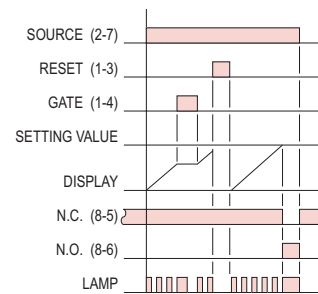
2C, Mode A



1A1C, Mode B

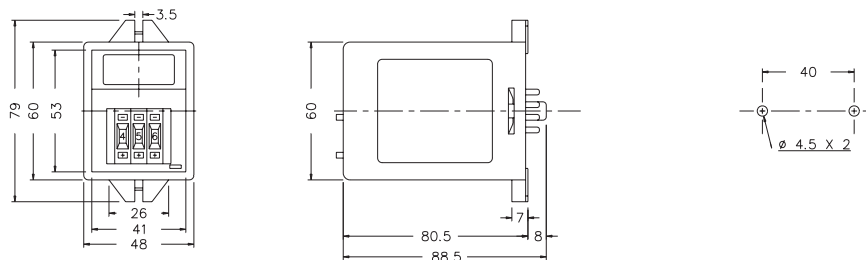


G Type

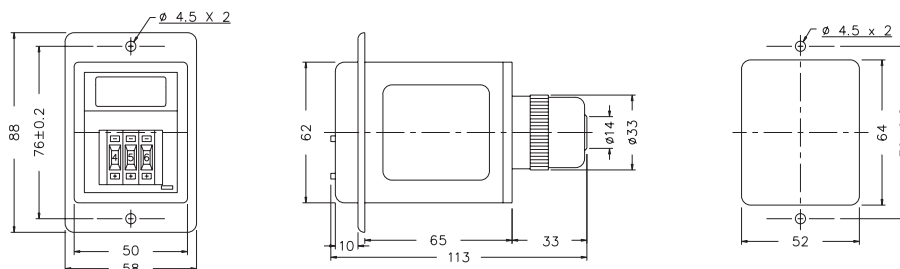


DIMENSIONS : (mm)

N type(Surface Mounting) : Using PF085A Socket



Y type(Flush Mounting) : Using US-08 Socket or P3G-08 Socket



ANLY ELECTRONICS CO., LTD.

<http://www.anly.com.tw>

TAIWAN MAIN OFFICE : ANLY ELECTRONICS CO., LTD.

No.19, Lane 202, Fushou St., Shinjuang City, Taipei, Taiwan 242
TEL: +886-2-2996-3202 FAX: +886-2-2996-2017

MALAYSIA BRANCH : JUSTY ELECTRONICS (M) SDN, BHD.

No.1, Jalan 6/89B, Kawasan Perindustrian Trisegi, Batu 3 1/2 Off Jalan Sungei Besi, 57100 Kuala Lumpur, Malaysia
TEL: +60-3-7983-5758 FAX: +60-3-7981-5052

HONG KONG BRANCH : ANLY ELECTRONICS (HK) LTD.

Flat K, 13/F, Edward Mansion, 141 Prince Edward Road W., Kowloon, Hong Kong
TEL: +852-2397-2505 FAX: +852-2397-6080

SHANGHAI BRANCH : ANLY TECHNOLOGY (WUXI) CO., LTD.

Room 13G, No.831, Xinzha Rd., Jingan District, Shanghai, China 200041
TEL: +86-21-6218-3300 FAX: +86-21-6217-5911