



# ANLY COUNTER

## ASK PRESET COUNTER



### CHARACTERISTIC :

- Contact input
- Proximity and photoelectric switch compatible
- 7-segment-display for clear display and effective monitoring
- Excellent protection against interference
- Short or open input signal via pin 1 and pin 4
- Available on Count Up model or Count Down model
- Shut-off reset or shorting contact (1+3) for instantaneous reset
- CE certified

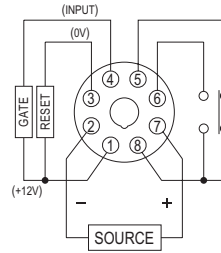
### SPECIFICATION :

Operating voltage	DC(V): 12, 24 AC(V): 12, 24, 110, 220, 240
Allowable operating voltage range	85~110% of rated operating voltage
Rated frequency	50 / 60 Hz
Contact rating	250VAC 5A (resistive load)
Count speed	MAX 60 cps or 200 cps
Reset time	MAX 0.5S
Power consumption	Approx. 3VA
Life	Mechanical: 5,000,000 times Electrical: 100,000 times
Ambient temperature	-10 ~ +50°C
Ambient humidity	MAX 85%RH
Weight	Approx. 230g

### TYPE SELECTION :

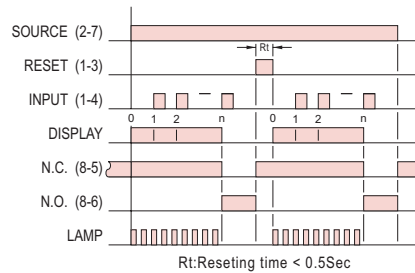
Display	1Digit(0~9)	2Digits(0~99)	3Digits(0~999)
STD.(under 60 cps)	ASK-1D	ASK-2D	ASK-3D
H.Speed(under 200 cps)	ASK-1DH	ASK-2DH	ASK-3DH
Count down	ASK-1DD	ASK-2DD	ASK-3DD
Auto reset	ASK-1DR	ASK-2DR	ASK-3DR

## CONNECTION :



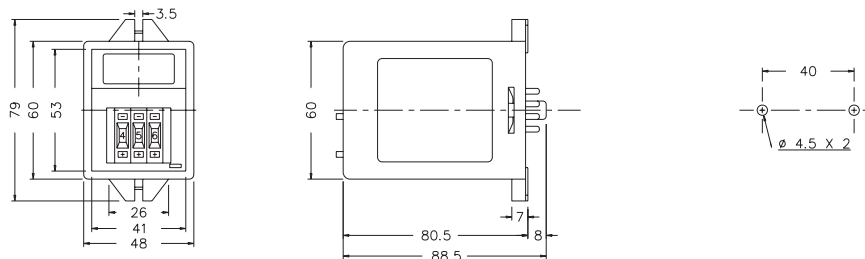
Note: When it using with Proximity or photoelectric switch, connect (+) to pin(1),(-) to pin(3), (OUT) to pin(4).

## TIMING CHART :

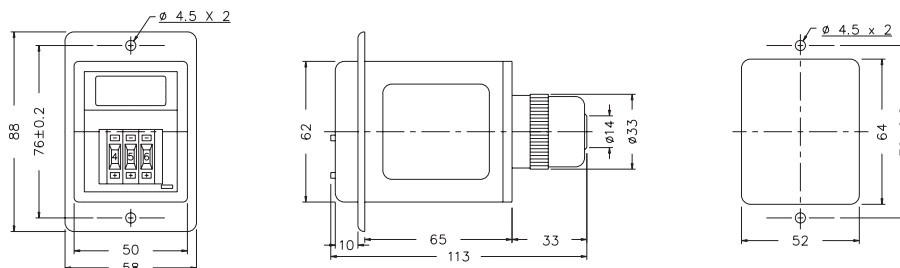


## DIMENSIONS : (mm)

N type(Surface Mounting): Using 8PFA Socket



Y type(Flush Mounting): Using US-08 Socket or P3G-08 Socket



**ANLY ELECTRONICS CO., LTD.**

<http://www.anly.com.tw>

**TAIWAN MAIN OFFICE : ANLY ELECTRONICS CO., LTD.**

No.19, Lane 202, Fushou St., Shinjuang City, Taipei, Taiwan 242  
TEL: +886-2-2996-3202 FAX: +886-2-2996-2017

**MALAYSIA BRANCH : JUSTY ELECTRONICS (M) SDN, BHD.**

No.1, Jalan 6/89B, Kawasan Perindustrian Trisegi, Batu 3 1/2 Off Jalan Sungei Besi, 57100 Kuala Lumpur, Malaysia  
TEL: +60-3-7983-5758 FAX: +60-3-7981-5052

**HONG KONG BRANCH : ANLY ELECTRONICS (HK) LTD.**

Flat K, 13/F, Edward Mansion, 141 Prince Edward Road W., Kowloon, Hong Kong  
TEL: +852-2397-2505 FAX: +852-2397-6080

**SHANGHAI BRANCH : ANLY TECHNOLOGY (WUXI) CO., LTD.**

Room 13G, No.831, Xinzha Rd., Jingnan District, Shanghai, China 200041  
TEL: +86-21-6218-3300 FAX: +86-21-6217-5911

NO. ASK-G-A