



ANLY TIMER

AH3-R WIDE VOLTAGE MULTI-RANGE ANALOGUE TIMER



CHARACTERISTIC :

- Wide operating voltage range in a single unit, from AC/DC 24V~240V
- Customized CMOS IC for low power consumption, high operation stability and extreme timing accuracy
- Flush mount with Type Y-40 adapter and surface mount without adapter
- 5 (RA, RB, RC, RD, RE) timing series available
- Each timing series has 4 time ranges, selectable via DIP switch
- A/B Mode selectable with a slide switch. A Mode for 2C Delayed output contacts. B Mode for 2C Inst.+Delayed output contacts.
- UL, C-UL recognized and CE certified

SPECIFICATION :

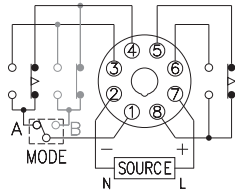
Operating voltage	AC/DC(V): 24 ~ 240
Allowable operating voltage range	85~110% of rated operating voltage
Rated frequency	50 / 60 Hz
Contact rating	250VAC 5A (resistive load)
Reset time	MAX 0.1S
Power consumption	Approx. 2VA
Life	Mechanical: 5,000,000 times Electrical: 100,000 times
Ambient temperature	-10 ~ +50°C (without condensation & freezing)
Ambient humidity	MAX 85% RH (without condensation)
Altitude	MAX 2000m
Weight	Approx. 120g

TYPE SELECTION :

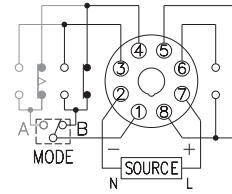
Type	AH3-RA	AH3-RB	AH3-RC	AH3-RD	AH3-RE
Output contact	A / B Mode				
Time range	1S / 10S / 1M / 10M	3S / 30S / 3M / 30M	6S / 60S / 6M / 60M	1M / 10M / 1H / 10H	3M / 30M / 3H / 30H

CONNECTION :

2C Delayed, A Mode

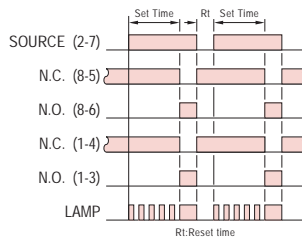


2C Inst.+Delayed, B Mode

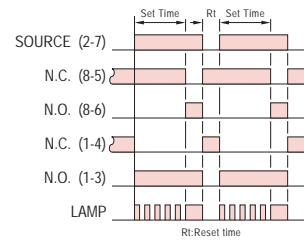


TIMING CHART :

2C Delayed, A Mode

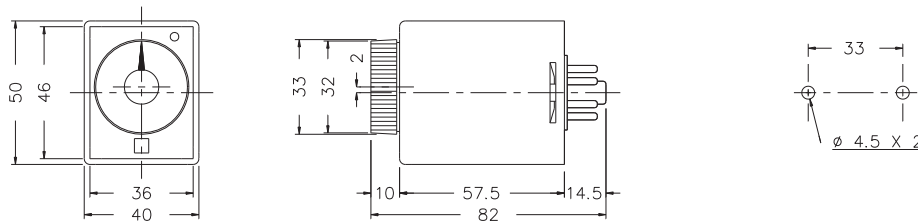


2C Inst.+Delayed, B Mode

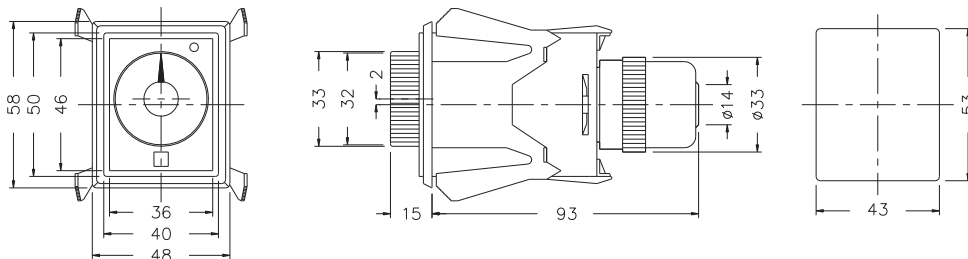


DIMENSIONS : (mm)

N type(Surface Mounting): Using PF085A Socket & FH-3



Y type(Flush Mounting): Using Y-40 Frame & US-08 Socket or P3G-08 Socket



Tolerance:±0.1

ANLY ELECTRONICS CO., LTD.

<http://www.anly.com.tw>

TAIWAN MAIN OFFICE : ANLY ELECTRONICS CO., LTD.

No.19, Lane 202, Fushou St., Xinzhuang Dist., New Taipei City 242, Taiwan
TEL: +886-2-2996-3202 FAX: +886-2-2996-2017

HONG KONG BRANCH : ANLY ELECTRONICS (HK) LTD.

Flat K, 13/F, Edward Mansion, 141 Prince Edward Road W., Kowloon, Hong Kong
TEL: +852-2397-2505 FAX: +852-2397-6080

SHANGHAI BRANCH : ANLY TECHNOLOGY (WUXI) CO., LTD.

Room 13G, No.831, Xinzha Rd., Jingan District, Shanghai, China 200041
TEL: +86-21-6218-3300 FAX: +86-21-6217-5911

MALAYSIA BRANCH : JUSTY ELECTRONICS (M) SDN. BHD.

No.1, Jalan 6/89B, Kawasan Perindustrian Trisegi, Batu 3 1/2 Off Jalan Sungei Besi, 57100 Kuala Lumpur, Malaysia
TEL: +60-3-7983-5758 FAX: +60-3-7981-5052

INDONESIA BRANCH : PT. ANLY ELECTRONICS INDONESIA

Jl. Pangeran Jayakarta 117/B9, Jakarta Pusat, 10730 Indonesia
TEL: +62-21-624-8436 FAX: +62-21-626-1228

NO. AH3R-S-A